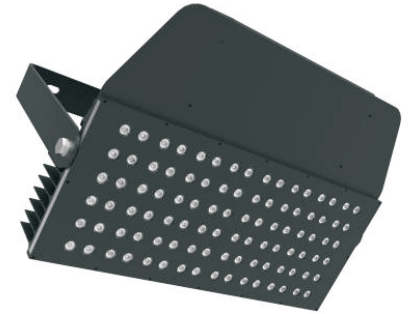


High Intensity LED Stadium Lighting



Features

- ◆ Narrow beam angle optic delivers highest luminous intensity
- ◆ Excellent light quality with 5000K natural daylight, and high CRI light output
- ◆ Instant-On delivers the light, eliminate “Cold-Start”
- ◆ Rugged waterproof design
- ◆ Allows for a 1 to 1 replacement of existing metal halide fixtures
- ◆ Extreme energy saving compared to traditional HID
- ◆ Light and slim
- ◆ Shock and vibration resistant

Application

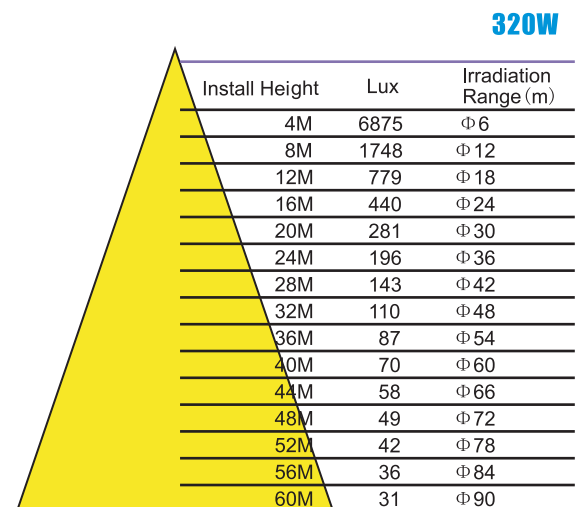
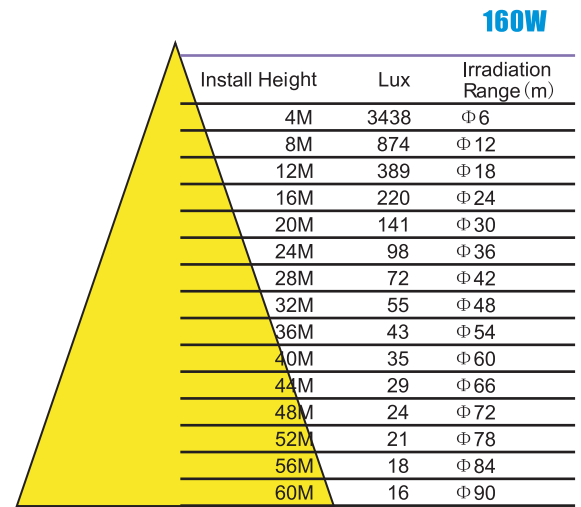
- ◆ Stadium Lighting
- ◆ Football Pitches
- ◆ Large Area Lighting
- ◆ High Mast



Specification

Model Number	TSD-160-01	TSD-320-01
Input Voltage	220-240Vac	220-240Vac
Input Frequency	50/60HZ	50/60HZ
System Power Consumption	160W	320W
Luminaries Initial Flux	17,500lm	35,000lm
Color Temperature	5000K	
CRI	70	
Beam Angle	20 Degree	
Power Factor	> 0.95	
Total Harmonic Distortion	< 10%	
Surge Protection	40KV	
Ingress Protection Rating	IP66	
Operating Temperature	-40°C to 50°C	
Storage Temperature	-40°C to 85°C	
Net Weight	5.0kg	9.0kg

Illumination Curve



Dimension (unit:mm)

